

# BRICK INN

## BED & BREAKFAST

*Caring hospitality in historic downtown*  
**WASHINGTON, MISSOURI**



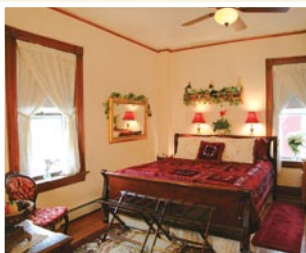
Inspected and approved by Bed & Breakfast Inns of Missouri



***Innkeepers Art and Kathy Winters*** invite you to share their circa 1911 ancestral home, conveniently located just three blocks from the river and downtown restaurants and shops.



*Kathy and Art on the Katy Trail*



*Two-Room Suite Bedroom*

### ***For your enjoyment...***

- Four guest rooms, all with king beds, private baths and WIFI
- Gourmet breakfast at a flexible time
- Hot tub and spacious patio
- Vintage car display
- Free shuttle service to Amtrak Station and the Katy Trail

**636-390-3264 • 314-440-7140**

[www.brickinnbedandbreakfast.com](http://www.brickinnbedandbreakfast.com) • [Art-Kathy@brickinnbedandbreakfast.com](mailto:Art-Kathy@brickinnbedandbreakfast.com)

516 West Third St. • Washington, MO 63090

# BRICK INN GUEST ROOMS

Special Whole Inn Rate—\$499 first night, \$429 second night  
(TAX NOT INCLUDED)



*Two-Room Suite — \$149 per night*



*Lord & Lady Room — \$129 per night*



*Queen Room — \$119 per night*



*King Room — \$109 per night*